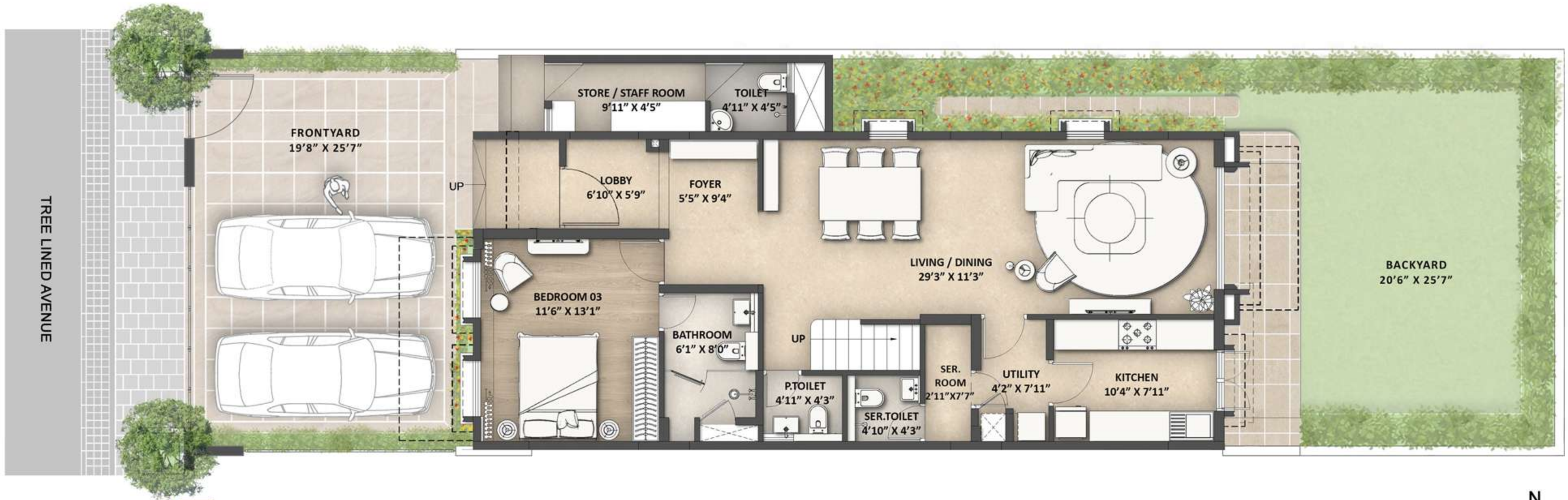


250 SQ.YARDS - GRAND (WEST) - NORTH SECURITY
 88'7" x 25'7"

FIRST FLOOR PLAN

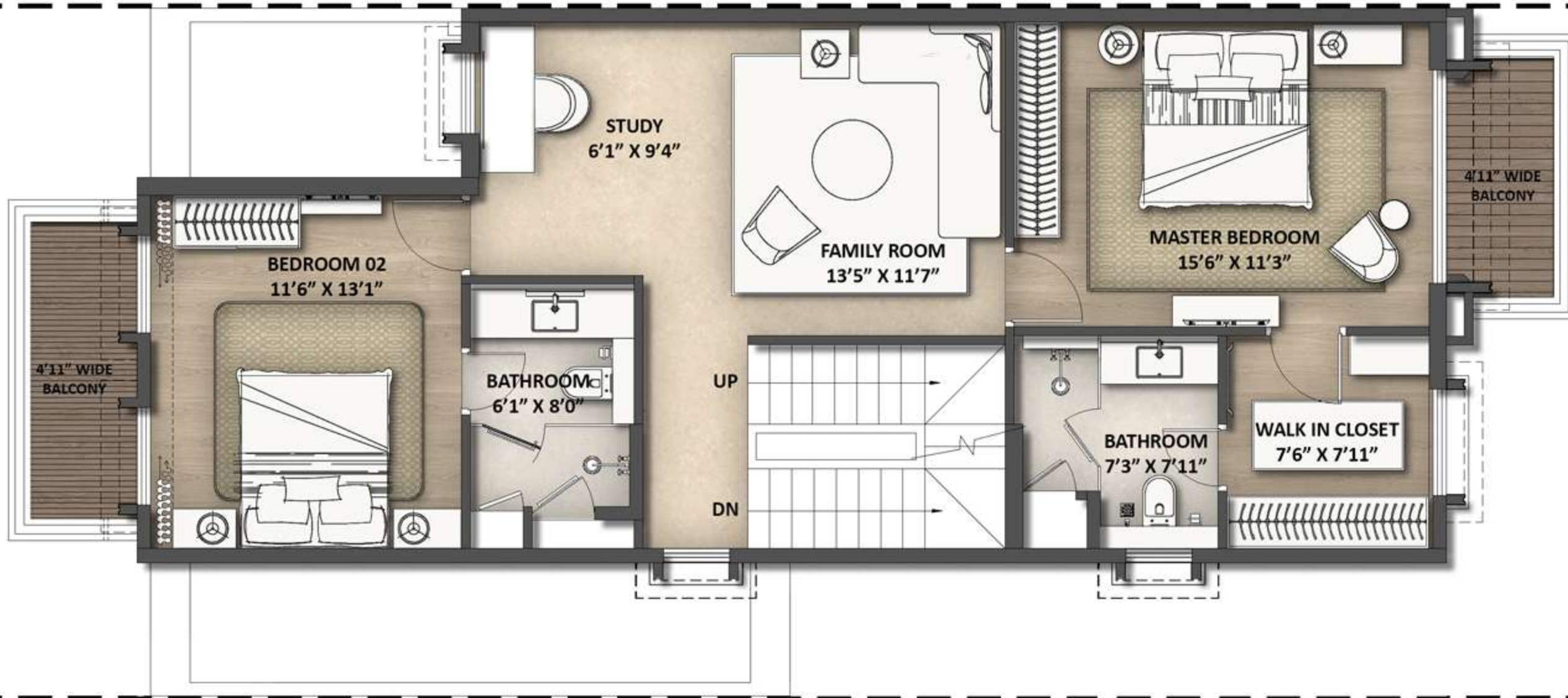




250 SQ.YARDS - GRAND (WEST) - NORTH SECURITY
88'7" x 25'7"

GROUND FLOOR PLAN



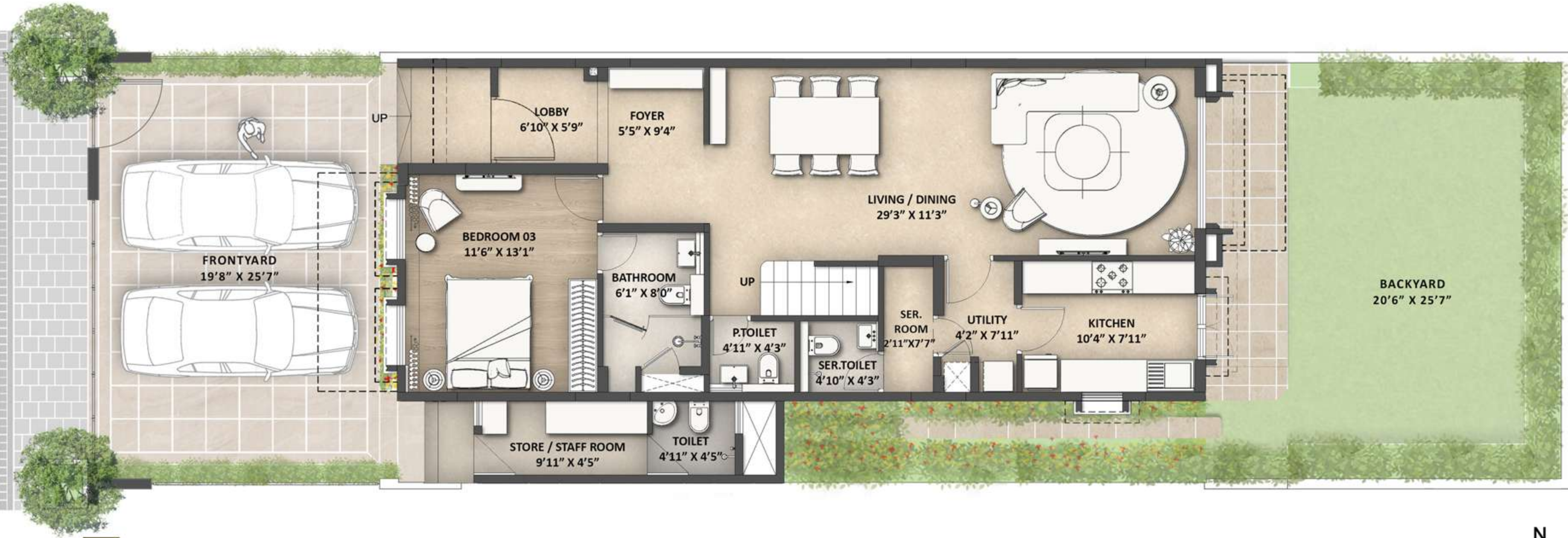


250 SQ.YARDS - GRAND (WEST) - SOUTH SECURITY
88'7" x 25'7"

FIRST FLOOR PLAN



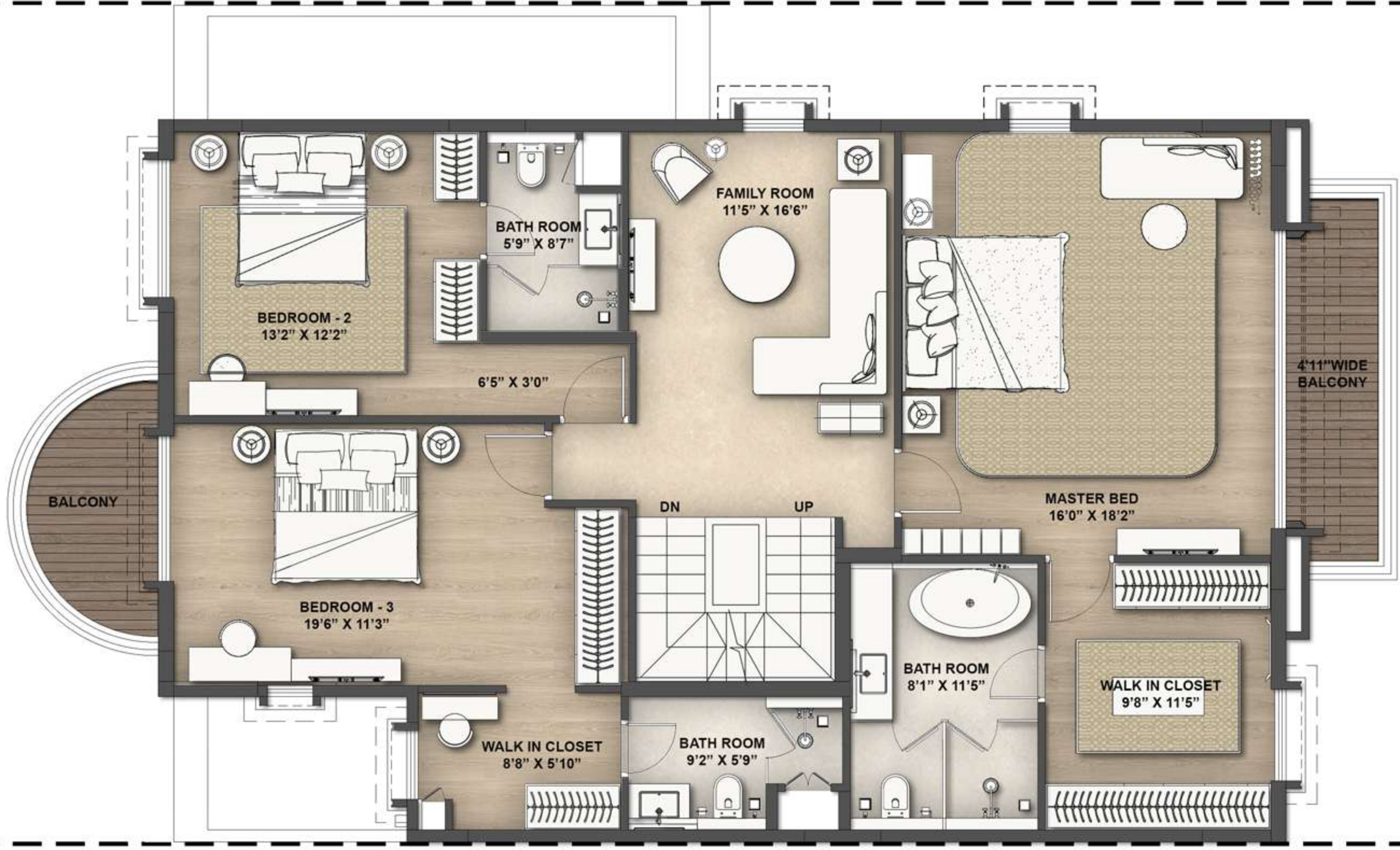
TREE LINED AVENUE



250 SQ.YARDS - GRAND (WEST) - SOUTH SERENITY
88'7" x 25'7"

GROUND FLOOR PLAN

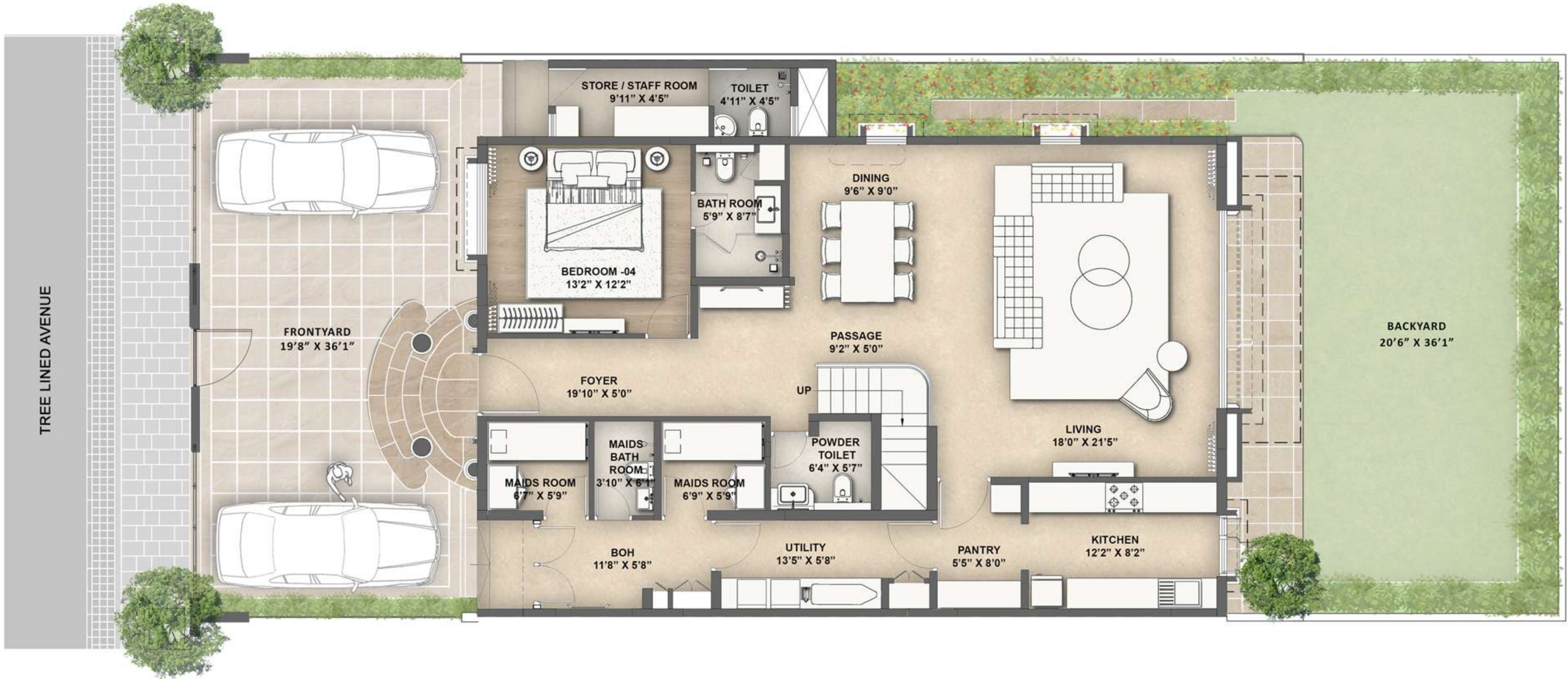




350 SQ.YARDS - ULTIMATE (WEST) - NORTH SECURITY
88'7" x 36'1"

FIRST FLOOR PLAN

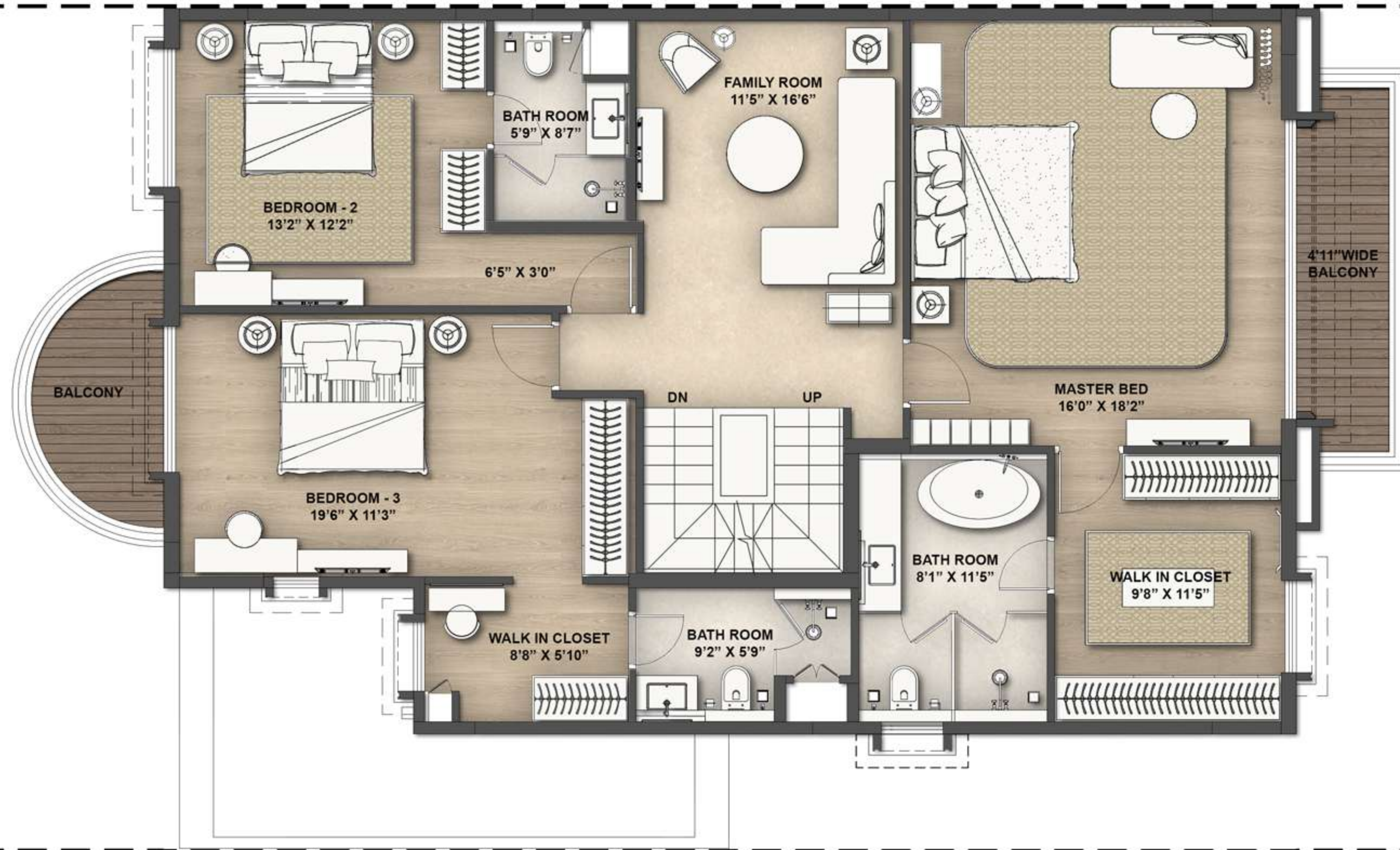




350 SQ.YARDS - ULTIMATE (WEST) - NORTH SECURITY
88'7" x 36'1"

GROUND FLOOR PLAN

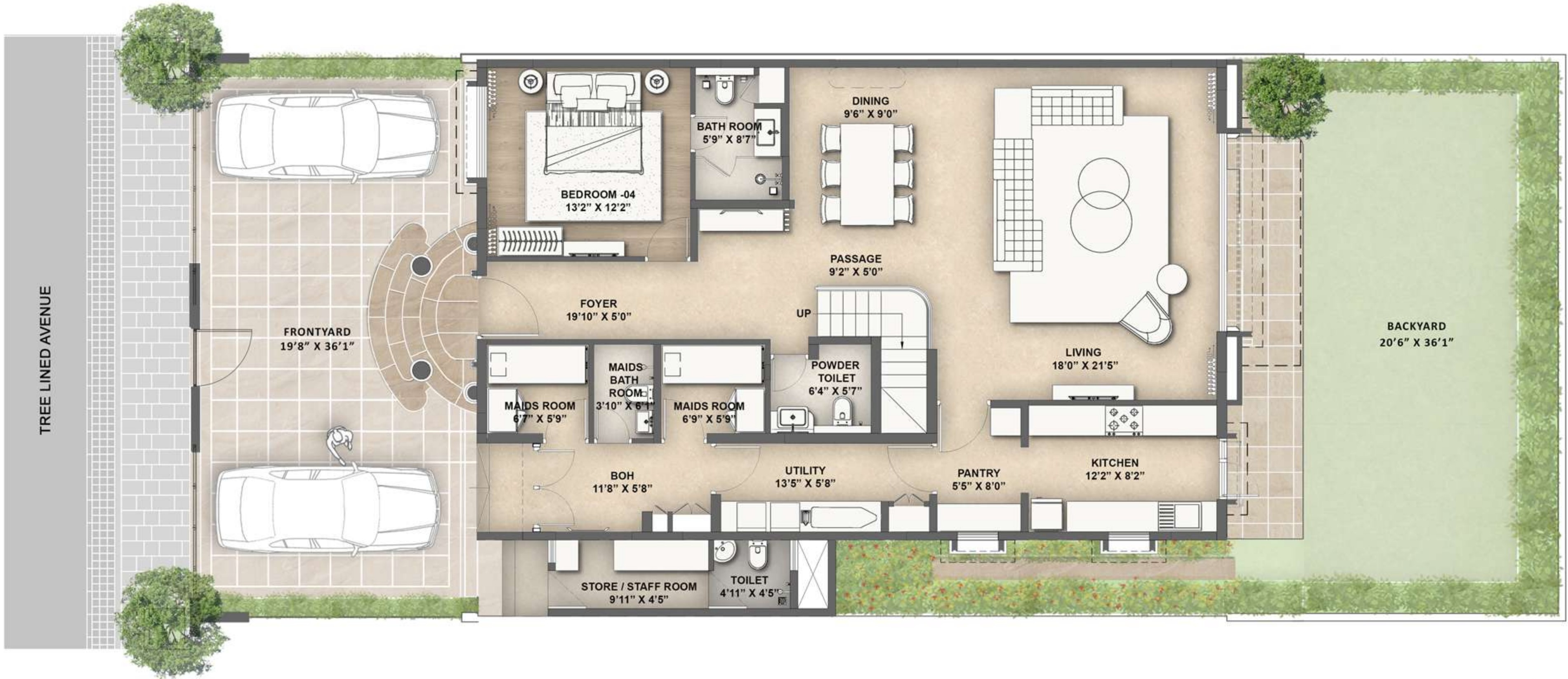




350 SQ.YARDS - ULTIMATE (WEST) - SOUTH SECURITY
88'7" x 36'1"

FIRST FLOOR PLAN





350 SQ.YARDS - ULTIMATE (WEST) - SOUTH SECURITY
88'7" x 36'1"

GROUND FLOOR PLAN





450 SQ.YARDS - SUPREME B
88'7" x 45'11"

FIRST FLOOR PLAN





450 SQ. YARDS - SUPREME B
(88'7" x 45'11")

GROUND FLOOR PLAN





TO KALYAN - BADLAPUR ROAD

PALAVA CENTRAL AVENUE

TO CLUB ELITE

LEGEND :

 250 SQ. YARD - GRAND	1. ESTATE ENTRY
 350 SQ. YARD - ULTIMATE	2. LAKE
 450 SQ. YARD - SUPREME	3. LAKE SIDE PROMENADE
 600 SQ. YARD - PRESIDENTIAL	4. TREE LINED AVENUES
	5. ESTATE CLUB
	6. ESTATE INFRASTRUCTURE
	7. FUTURE DEVELOPMENT

LARGER LAYOUT IS SUBJECT TO NECESSARY LAND ACQUISITION AND REGULATORY APPROVAL.
 MASTER PLAN AS ON DATE 02-08-2022

